

UI DESIGN

PARA WEB

2.1

CURSO ONLINE CRIADO POR
THIAGO BARCELOS

IBCC
escola
britânica
de artes
criativas

Módulo #2

Design para Tela

DESIGN PARA TELAS

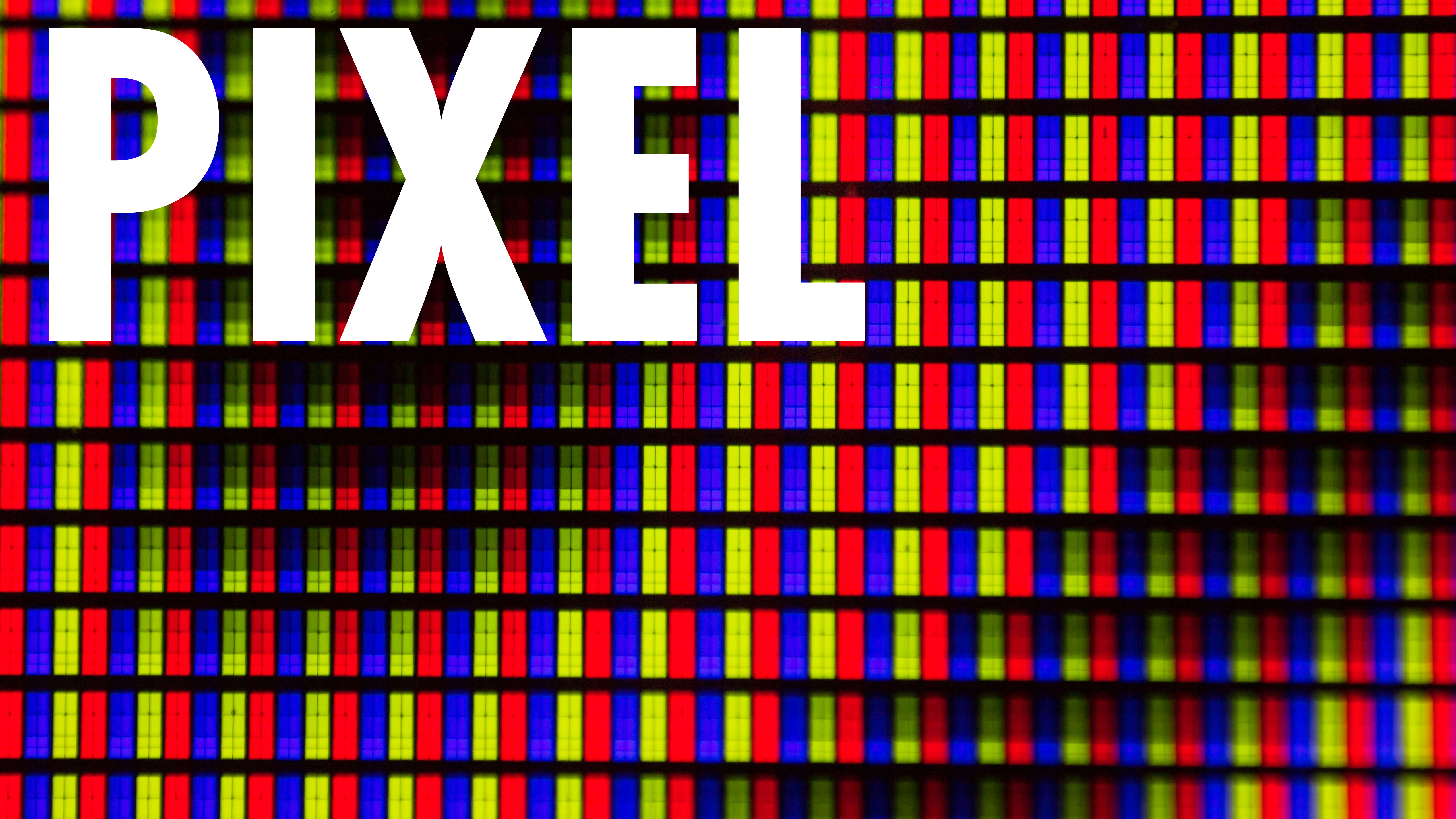








PIXEL





PIXEL

PERFECT

HISTÓRIA DO DESIGN

Da revolução
industrial à era
exponencial...

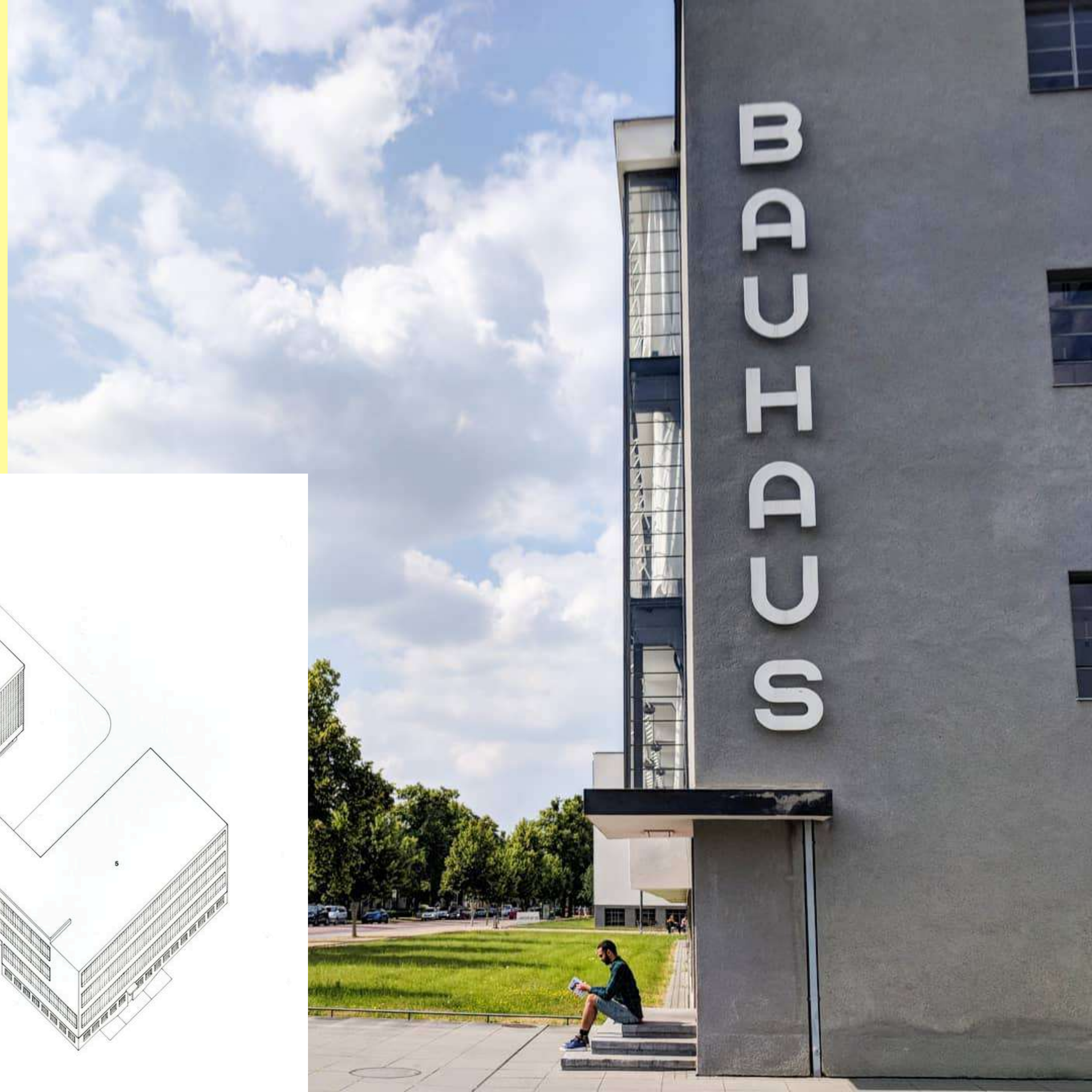
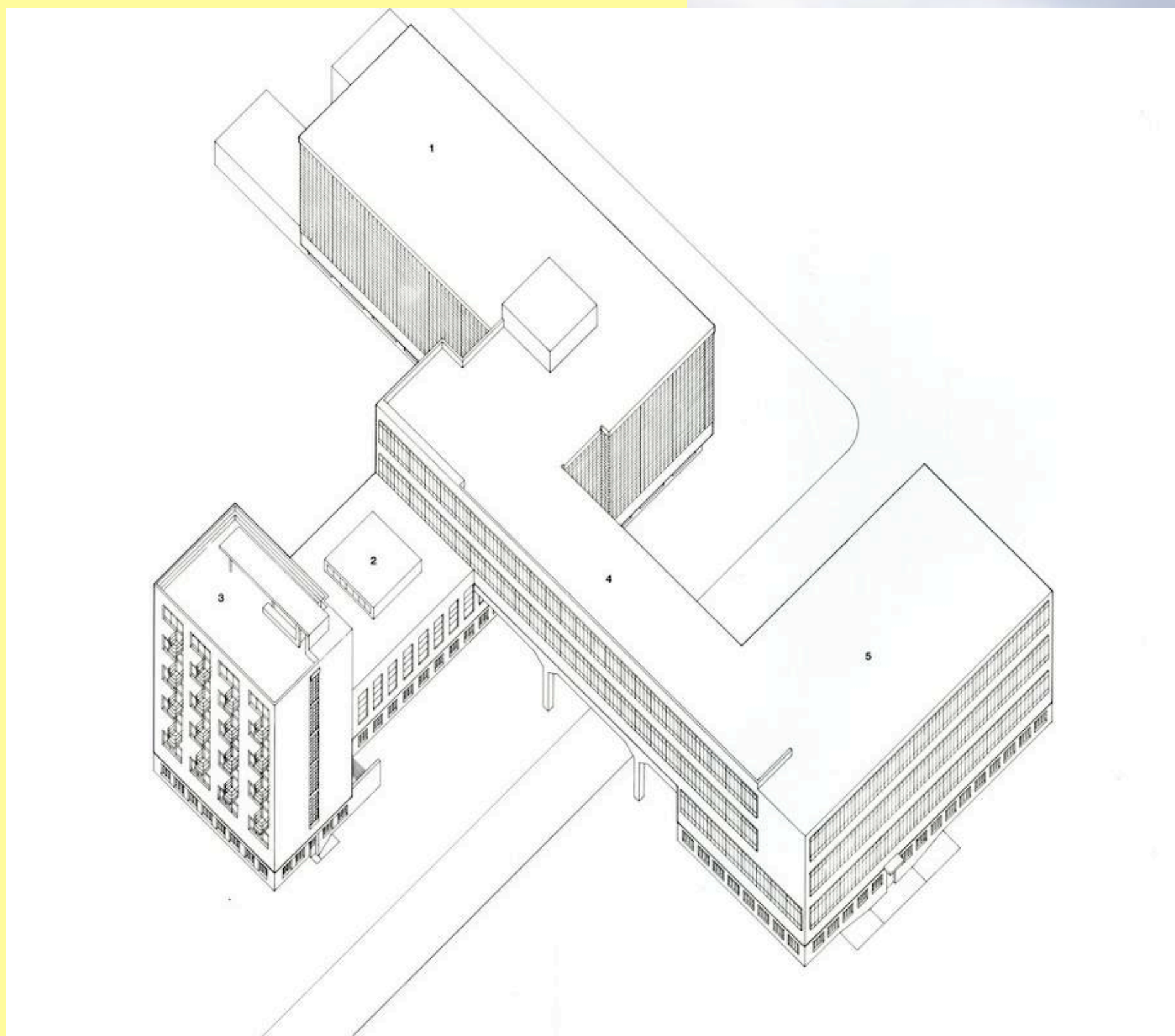
...ou era da
Experiência

Modernismo

Fim sec. XIX, início sec. XX



Prática projetual e arquitetura



“Forma segue a função.”

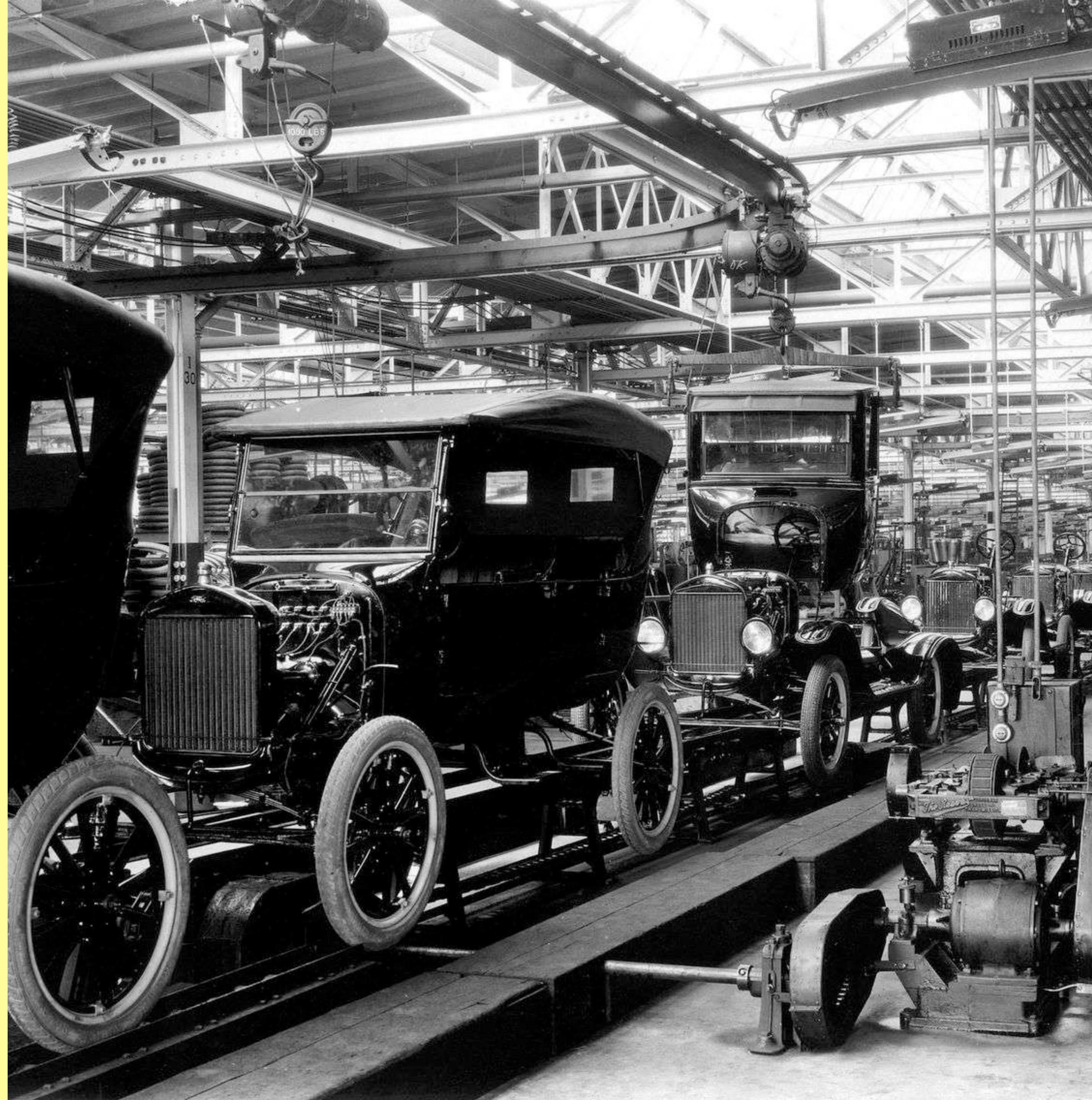
Louis Sullivan



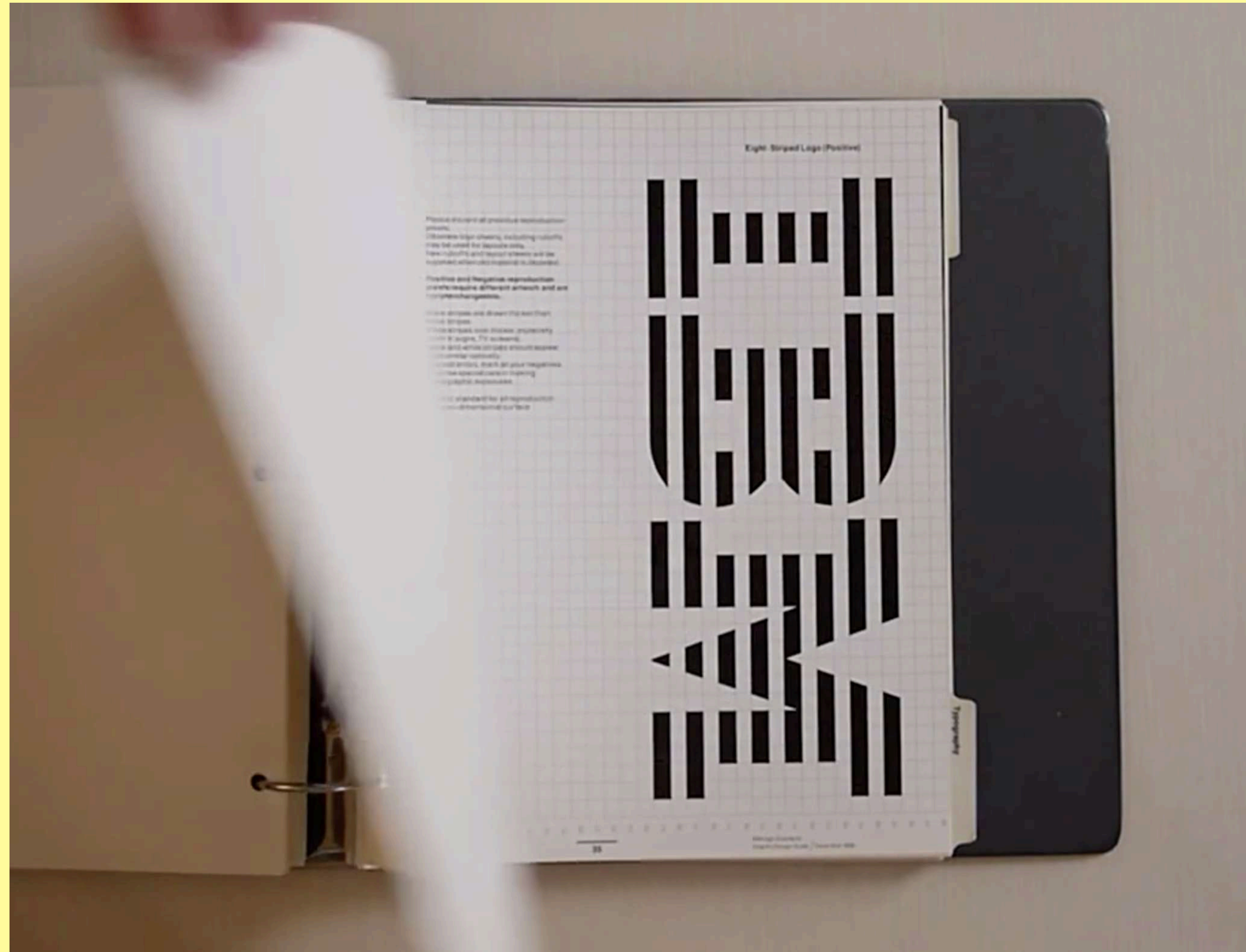
Design Industrial



Produção em larga escala



Identidade corporativa



Computação e a ascensão da Interface Gráfica de Usuário (GUI)



Massificação do computador pessoal e a Web



Search Stanford

10 results ▾ clustering on ▾ Search

Search The Web

10 results ▾ clustering on ▾ Search

Internet móvel

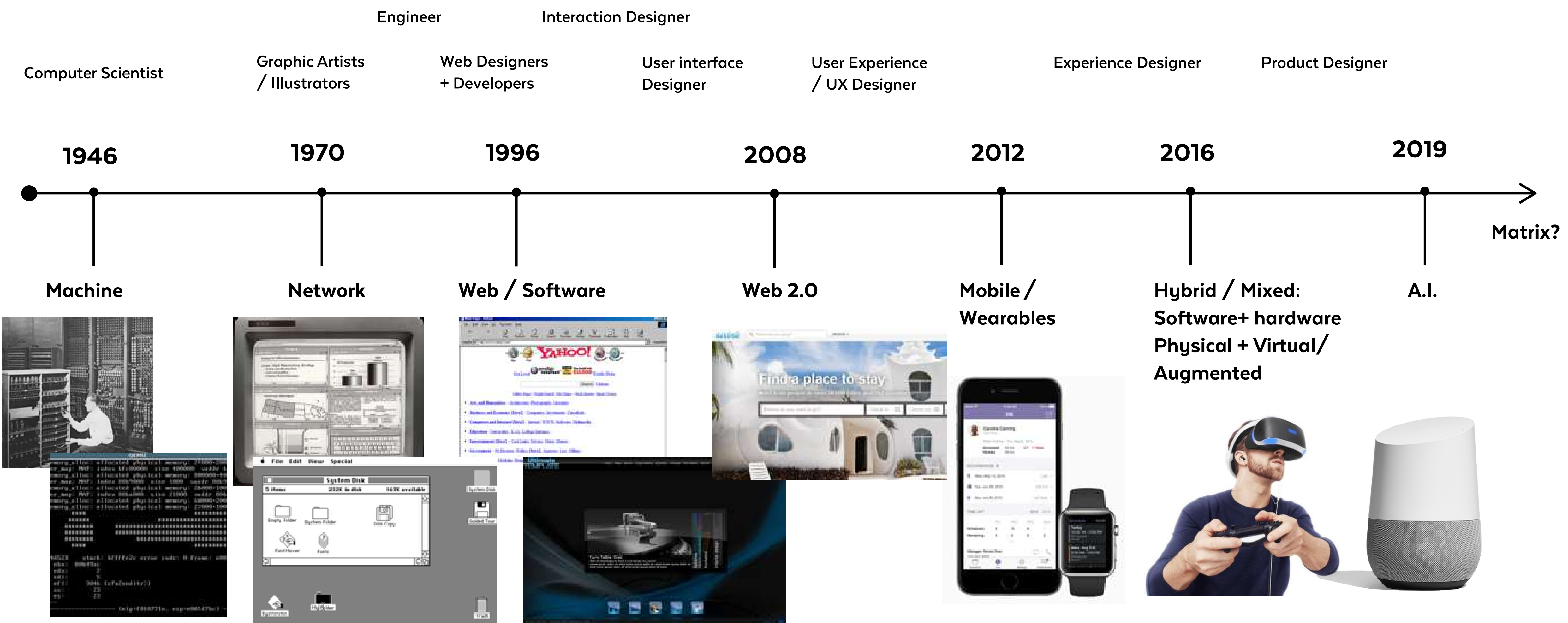


Assistentes cognitivos

Processamento na
Nuvem, Big Data,
IoT, Inteligência
Artificial



Breve história do design e tecnologia



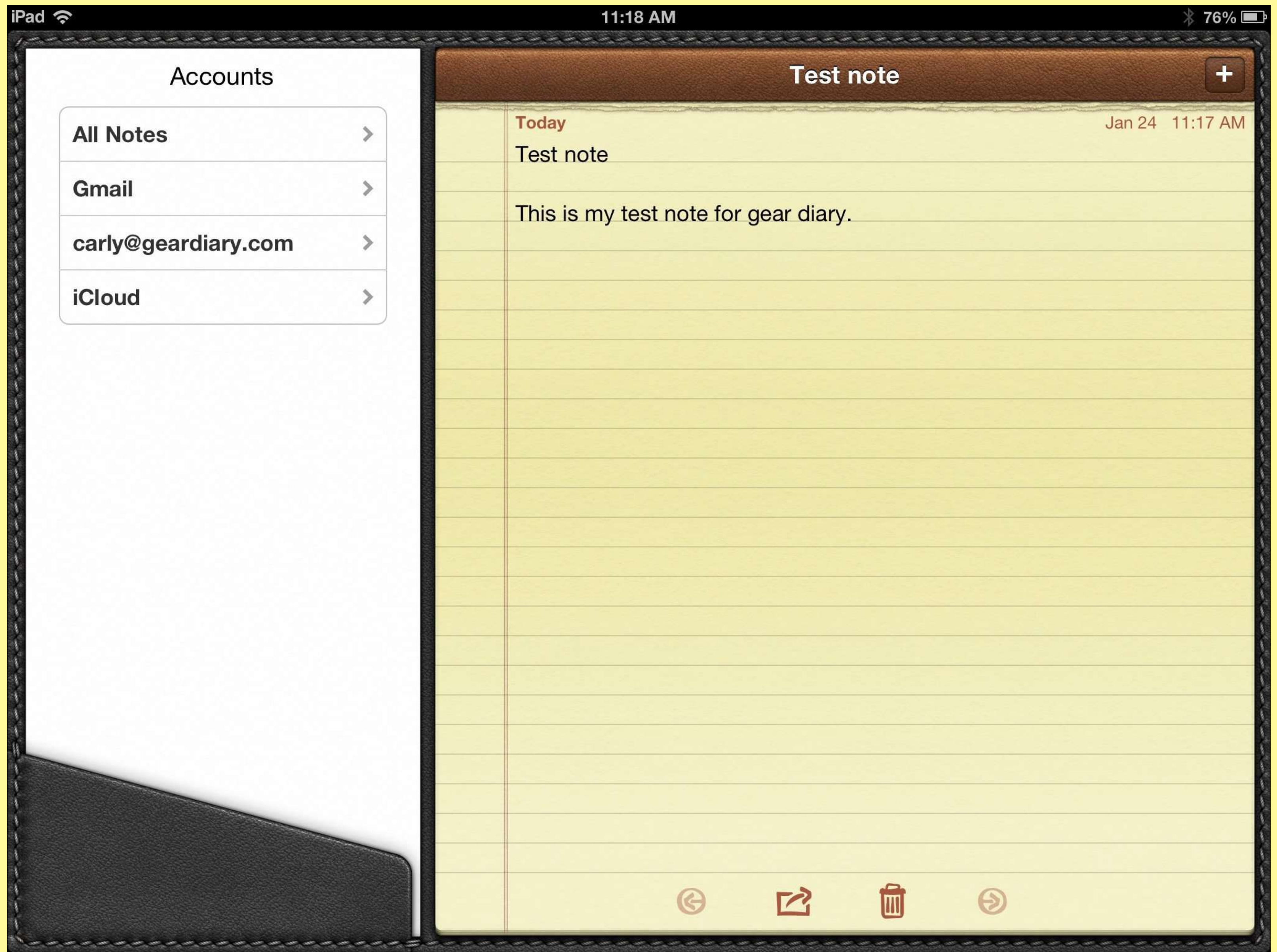


A:
A:\dir
Volume is drive A: has no label
Directory of A:
DIRS DIR 12000 12-06-83 1:22p
MODS DIR 15000 2-08-83 7:48p
COMM COB 15400 2-08-83 9:20p
DUMP DIR 36000 3-05-84 3:21p
UPNICH CXC 7000 3-07-84 9:03p
HFC DIR 11764 2-01-83 10:12p
DEBUC COB 6000 1-01-80 12:00p
VTE CXC 20400 12-06-83 6:40p
USPICS COB 21276 1-01-80 12:00p
USDAW COB 41214 1-01-80 12:00p
USDAW1 DIR 1152 2-02-84 9:11p
DIR 12 Files 127000 bytes free

AMPEX
8500



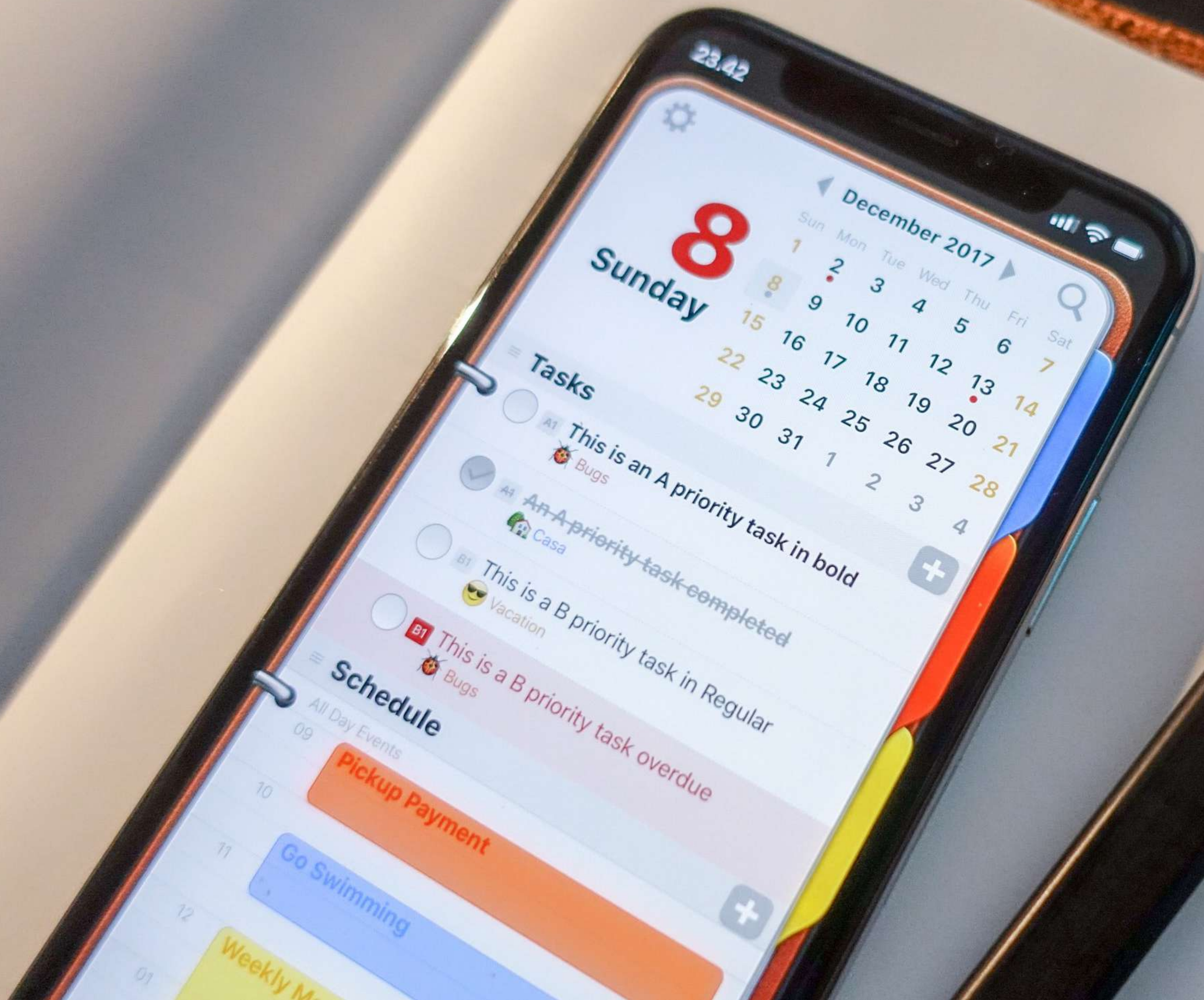




Skeuomorfismo

vs.

Flat design











Resolução de tela a partir da largura

1280 px

1440 px

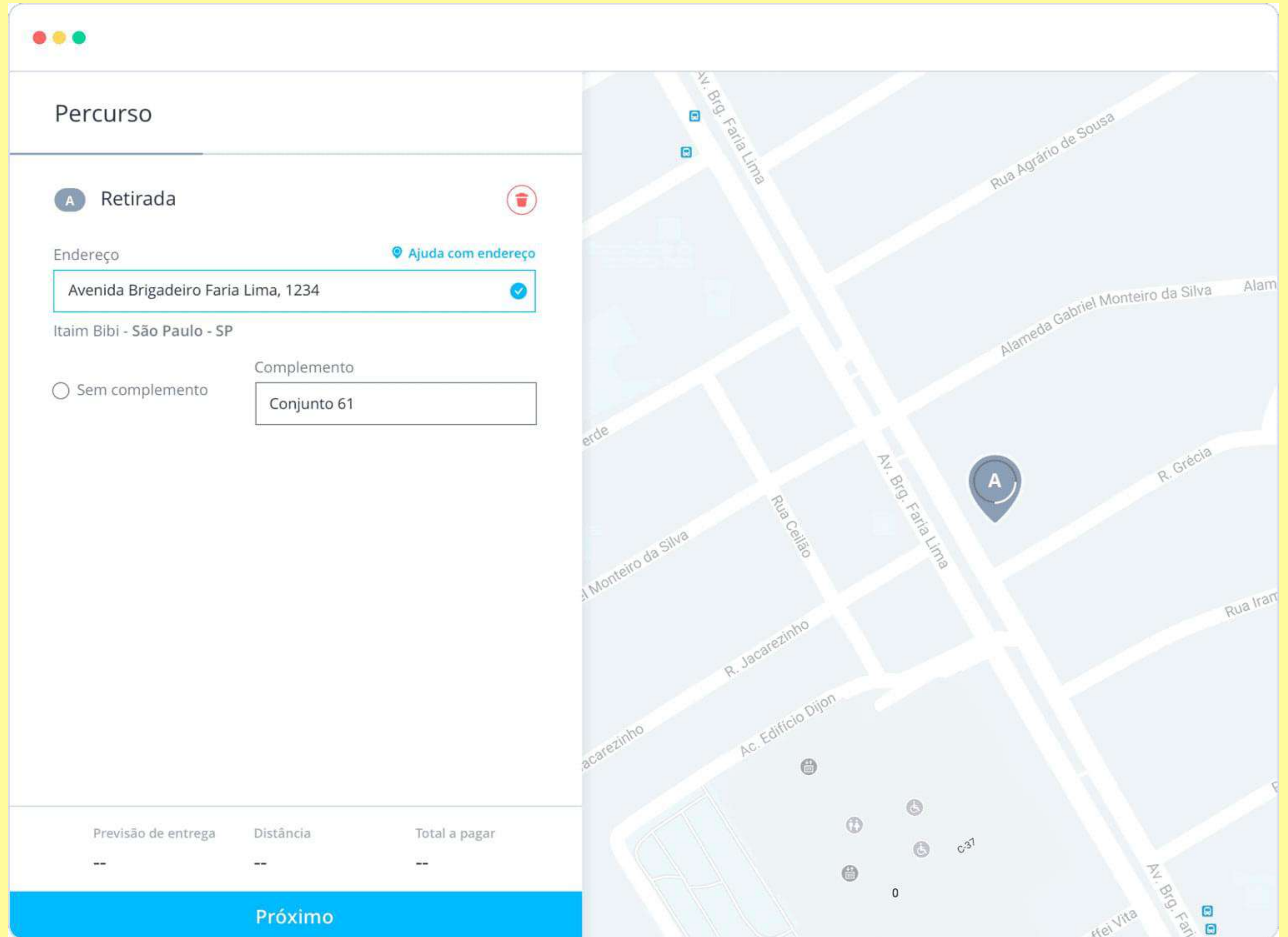
1920 px

Densidade de pixel
Telas em geral 72 dpis
144 dpis para telas
retina quad k e 4k
@2x, @3x

Suporte

Desktop

- Web sites
- Portais
- Intranet
- Web apps
- Ecommerce
- Social media



Loggi

Suporte

Mobile App

Tablet / Smartphone

Nativo

- iOS
- Android

Híbrido

- Flutter
- Xamarin

PicPay

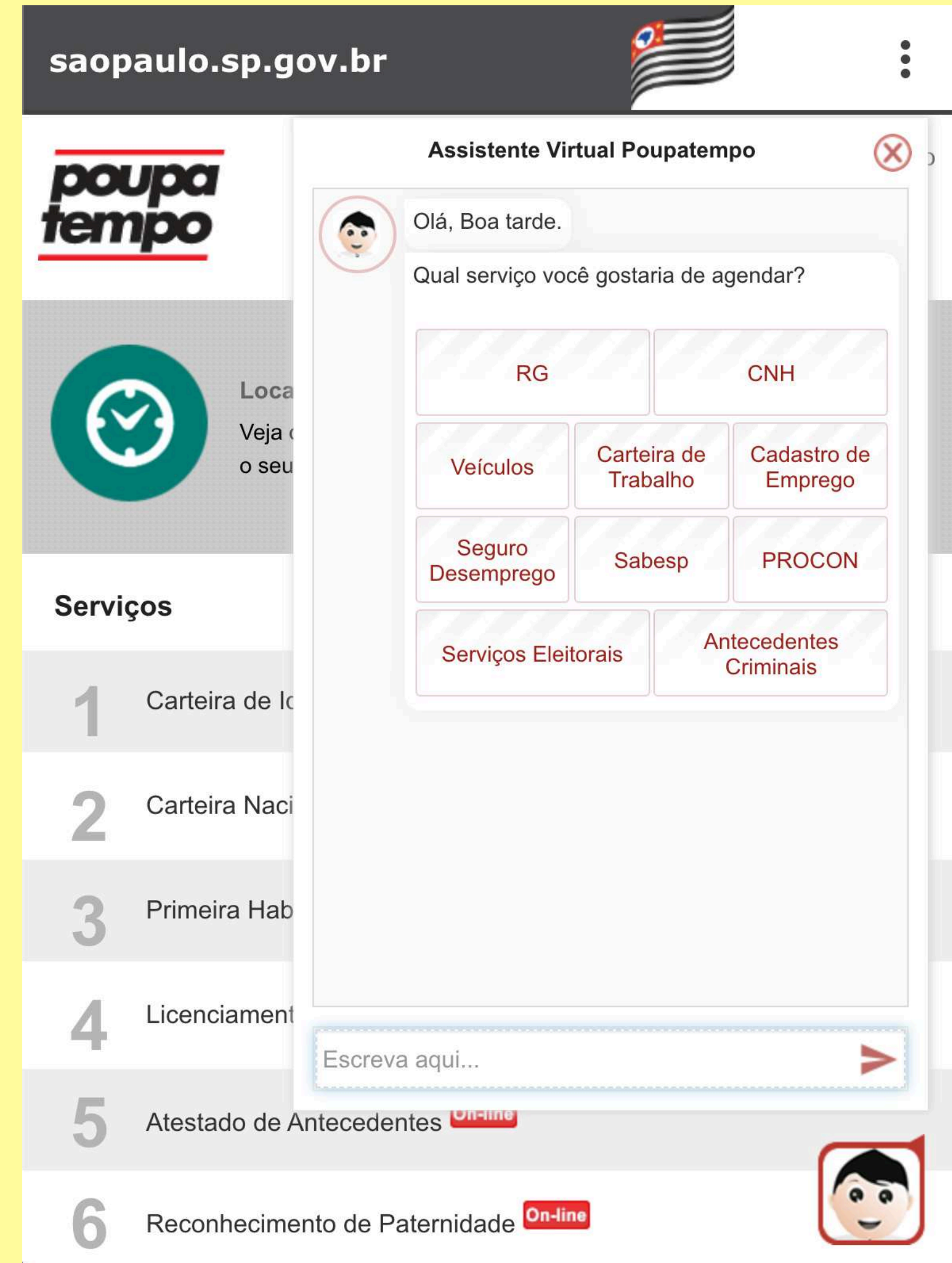


Suporte

Chatbots, URA

- IBM Watson Assistant
- Amazon Alexa
- Nama
- Blip

Poupinha



Suporte

Outros formatos



Suporte

VR

- Microsoft HoloLens
- Facebook AR/VR



Hololens

BCA escola
britânica
de artes
criativas